

Serial Bluetooth wireless setup configuration examples.

Option 1



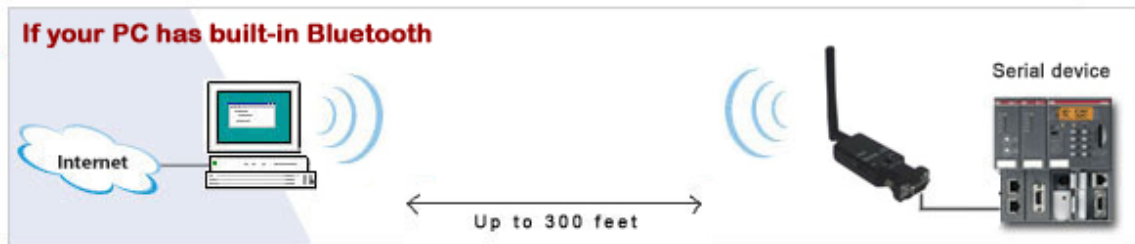
Direct cable replacement. One Master adapter communicates with one Slave adapter to create a wireless link between a computer and a serial device. Only one Slave can be connected to one Master. Often used if PC has no built-in Bluetooth.

Option 2



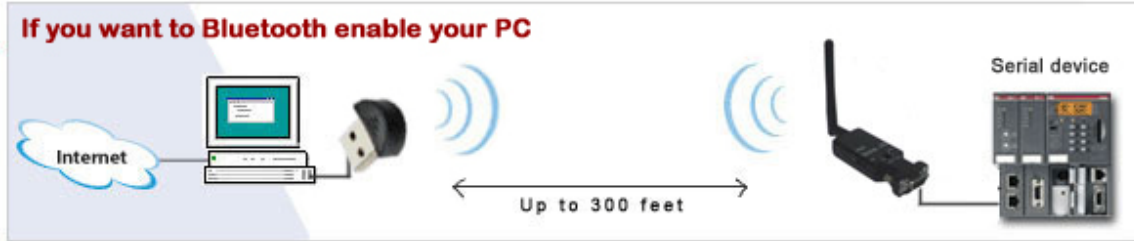
Direct cable replacement option 2. If your computer does not have a serial port you can connect the serial Bluetooth adapter to your computer by using a USB to serial adapter.

Option 3



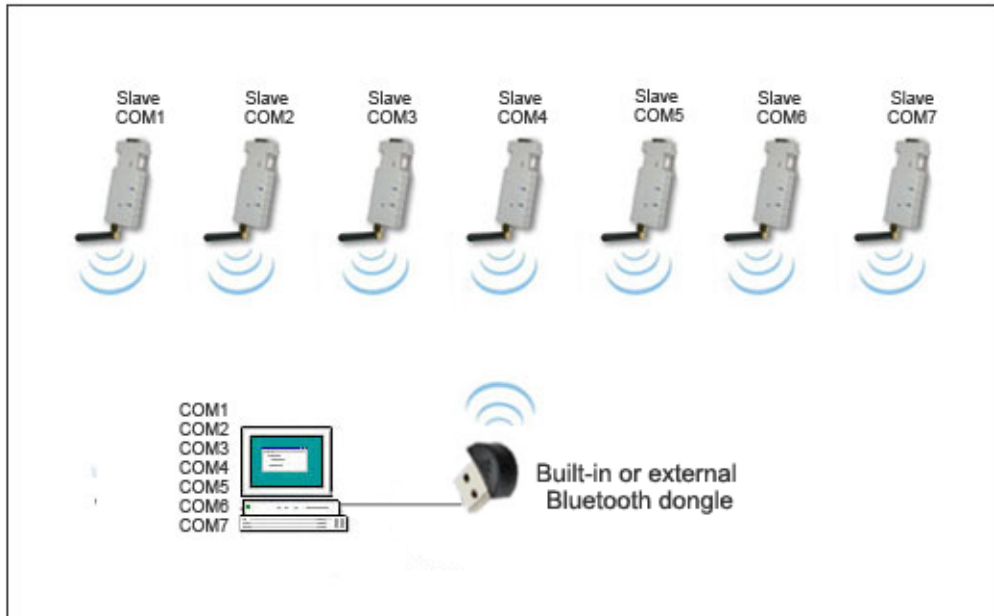
PC has built-in Bluetooth. One to one communication between built-in Bluetooth and serial device. Up to 7 serial Bluetooth adapters can be connected to the computer by using this setup.

Option 4



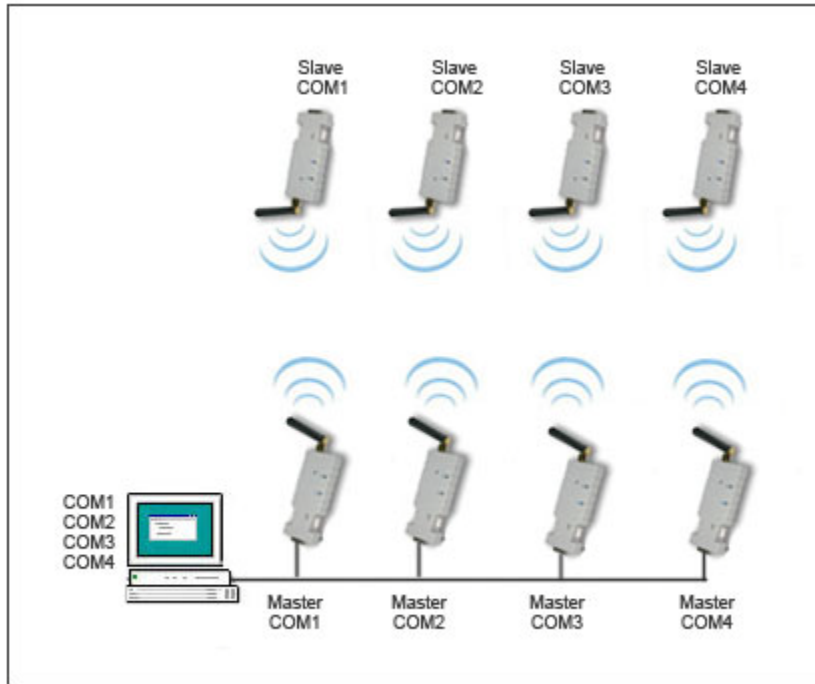
If you want to Bluetooth enable your computer you can use an external USB Bluetooth dongle. Up to 7 serial Bluetooth adapters can be connected to the computer by using this setup.

Option 3 and 4 above illustrated:



Point to multipoint configuration. Up to 7 Slaves can link with one Master adapter, built-in Bluetooth or external USB Bluetooth dongle. Each COM port of the slaves shows up in Device Manager. Windows (Vista, 7 and 8) Bluetooth Manager is used to connect to the serial Bluetooth adapters.

Alternative solution for connecting multiple serial Bluetooth adapters.



Multiple serial Bluetooth adapters in pairs. Ideal for applications where more than 7 links are needed, (max 255) and multiple COM ports are available. COM port can be selected manually with external switch.