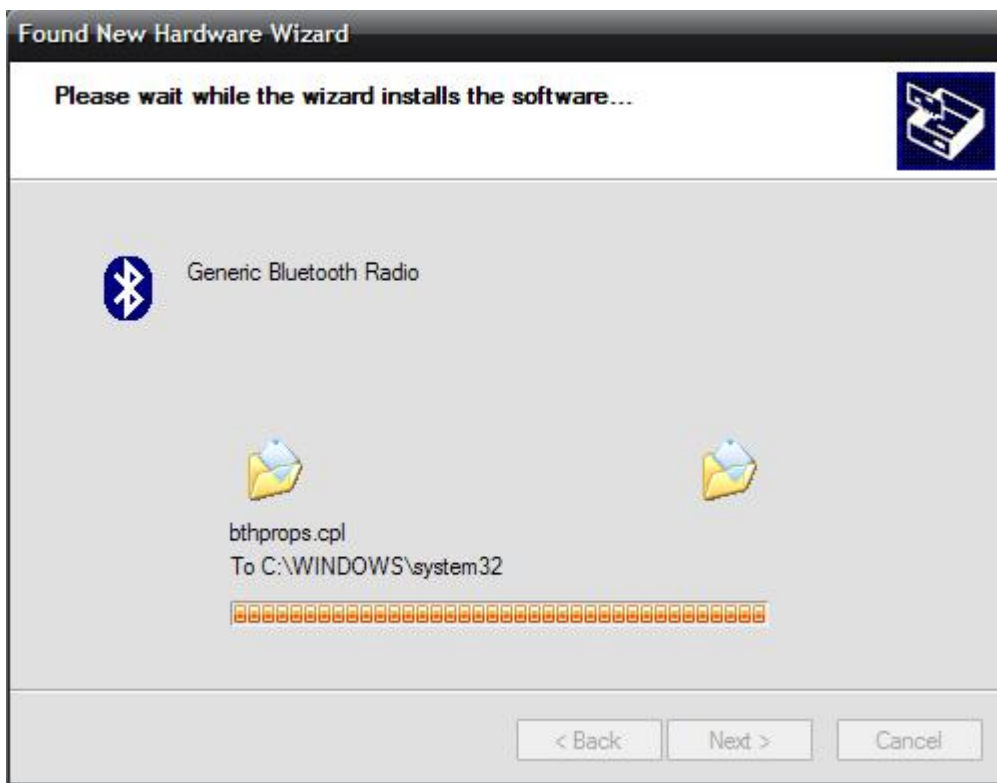


**Before you can install this, you must make sure you have updated your XP to at least Service Pack 2, as this included the Bluetooth Support Addon.**

To install, download and extract all the files somewhere, like for example on your desktop in a folder called Bluetooth drivers. Then plug the stick in, Windows will fail to find the drivers and ask you to either provide a location for them, or provide a CD. Provide the location and give Windows the folder location of the extracted drivers. Windows will now install the drivers and your Dongle will be ready for use. You should now be up and running with the Windows Bluetooth Interface, which you can find in Control Panel or in the System Tray.

#### **Screenshots of Install and Use:**



## Found New Hardware Wizard



### Completing the Found New Hardware Wizard

The wizard has finished installing the software for:



Generic Bluetooth Radio

Click Finish to close the wizard.

< Back

Finish

Cancel

